

BELLBRIDGE NEWS



Bellbridge Primary School
120 Bellbridge Drive, Hoppers Crossing, 3029

Telephone 9749 6161

bellbridge.ps@edumail.vic.gov.au

www.bellbridgeps.vic.edu.au

STUDENT ABSENCES

Absences so far this year - 41
Absences same time last year - N/A

DATES TO REMEMBER

Tuesday 6 th February	-	Safer Internet Day
Wednesday 7 th February	-	Bellbridge 3-6 District Swimming Try-outs
Wednesday 7 th February	-	No Preps classes
Wednesday 7 th February	-	Netbook Handover Evening 5:30-6:00pm
Wednesday 14 th February	-	No Preps classes
Friday 16 th February	-	Grade 6 Interschool Sport
Monday 19 th February	-	District Swimming Competition
Monday 19 th February	-	Prep Parent Information Evening 6:00-7:00pm
Monday 19 th February	-	Parent-Teacher Meetings
Tuesday 20 th February	-	Parent-Teacher Meetings
Wednesday 21 st February	-	No Prep classes
Friday 23 rd February	-	Grade 6 Interschool Sport
Wednesday 28 th February	-	No Prep classes
Friday 2 nd March	-	Bellbridge Grade 3-6 Athletics Carnival (VU Fitness Track)
Thursday 8 th March	-	Grade 6 Interschool Sport Lightning Premiership Gala Day
Monday 12 th March	-	LABOUR DAY HOLIDAY
Thursday 15 th March	-	Division Swimming Competition
Friday 16 th March	-	BELLBRIDGE TWILIGHT CARNIVAL

LATE ARRIVAL/EARLY LEAVERS

Any child arriving to school after 8.30am is required to attend the office, with a parent/guardian, to obtain a late pass. If your child is leaving school early, the parent/guardian is required to send a note with their child on the morning informing the classroom teacher of the time they will be collected and who will be collecting them. The parent/guardian is required to sign the child out at the office, where arrangements will be made for the child to come up to office.

ABSENCE FROM SCHOOL

If your child is absent from school for any reason, we require parents/guardians to notify the school office that they won't be attending. When your child returns to school, a note must be given to their teacher detailing the date and the reason for the absence.

If your child has any long term absences from school, (e.g. holidays, extended illness etc.) a note is required to be given to their teacher informing them of the absence prior to them commencing the absence.

ASSEMBLY – STARTING FRIDAY 9th FEBRUARY

ASSEMBLY is each Friday afternoon at 1:50pm (starting in Week 2), unless otherwise advised via the **newsletter**. Parents and families are invited to attend. There are awards, announcements, and at times, special presentations. Next week, the following Grade 6 students will be presented with their student leadership badges: School Captains and House Captains.

STAFF at BELLBRIDGE PRIMARY SCHOOL

We are pleased to welcome some new staff to our school community – Tayla Muscat (1D), Ella Gibson (1E), Dom Marafioti (4D), Jaxon Leith (6D) and our First Aid Officer – Katie Carter.

A staff list and school map is included in this newsletter.

PARENT TEACHER MEETINGS (Meet & Greet) – Monday, February 19th/Tuesday, February 20th

We will be having Parent Teacher meetings on Monday, February 19th (2:50 – 6:30pm) and Tuesday, February 20th, (2:50 - 4:10pm). This is an opportunity to establish a shared relationship and build on the home school partnership with your child's teacher. It is also important for parents to share information that is specific to their child's needs.

We look forward to having conversations with all parents at these meetings so we can start the year with shared expectations.

Some information that can be shared at the interview may include:

- Your child's current health situation, e.g. allergies, asthma (which require a management plan)
- Changed family circumstances
- Dates for any extended absences that are being planned (e.g. holiday overseas)
- Issues that may impact on the completion of homework

When teachers are aware of special circumstances in a child's life they are able to understand and support the student in a variety of ways and your timely communication allows us all to work as a team.

Bookings for these meetings will be processed electronically via Compass – more information will be communicated very soon.

LOG IN TO COMPASS TO BOOK YOUR PARENT-TEACHER MEETING (opening soon)

COMPASS is our online portal used for parents to:

- *Access your child's Semester Reports
- *View up-to-date attendance information, and add approvals or explanations for absences (before or after the absence)
- *Access information regarding upcoming events and news, including a school calendar
- *Update your registered email and mobile number (used for SMS alerts) details
- *Receive alerts via text message or email
- *Provide information and online consent functionality for sports, camps and excursions
- *Make most payments online
- *Make bookings for Parent/Student/Teacher conferences

The bookings for Term 1 Parent-Teacher Meetings will open shortly, and a text message will be sent to advise parents of the date/time the system will be available to make bookings. Families with multiple children at our school are advised to book early to ensure the time slots can be made around the same time. We recommend that you do not book time slots immediately following each other - just to be sure you have time to move from one classroom to the next. Login to Compass using the mobile app or Compass weblink on our school homepage.

[\(https://bellbridgeps-vic.compass.education/\)](https://bellbridgeps-vic.compass.education/)

If you can't remember your password for Compass, please go to the Compass Portal and select "Can't access your account?"

This link will take you to: <https://bellbridgeps-vic.compass.education/Portal/ForgotPassword.aspx> where you can take steps to change your password.

EVERY DAY COUNTS (formerly known as 'It's not okay to be away')

Our school has a strong commitment to maximum student attendance at school. Regular attendance contributes to successful relationships between students and staff, strong feelings of connectedness to school and increased student learning outcomes. We enjoy acknowledging students and families who are making an effort to attend school on a regular basis with certificates and awards at Assembly.

HOME SCHOOL PARTNERSHIPS are IMPORTANT at BELLBRIDGE

Our staff will be setting and revisiting clear and achievable expectations with all students so that we are all clear about our roles and responsibilities. In order for students to receive a clear and consistent message we feel it is also important for families to support these expectations through conversations and actions at home. Some ways you can support a strong home school partnership include:

- Reading the newsletter with your child every week
- Asking for, and checking your child's student diary or communication book every school day
- Talking about sensible and safe play at home and school
- Monitoring homework tasks on a regular basis
- Attending meetings with teachers, where necessary

A major success in our partnership so far this year has been the support demonstrated by our parents who have provided their children with the necessary resources and positive attitude to have an extremely organised and settled start to the school year. Well done!

SHARED VALUES AT BELLBRIDGE

We are very proud of our strong culture of good civics and citizenship at Bellbridge Primary School. This is actively demonstrated by our commitment to living out a set of shared values which are:

- We are individuals
- We aim, we achieve
- We are responsible citizens, and
- We value team work

SCHOOL WIDE POSITIVE BEHAVIOUR SUPPORT Program (SWPBS)

The SWPBS is a whole school approach designed to promote and maintain a safe and orderly learning environment for all students and staff.

It focuses on everyone and all settings within the school, and promotes a positive focus on academic and behavioural outcomes across the school.

It clearly defines our core expected behaviours (rules), which are:

- **Be safe**
- **Be Respectful**
- **Be Responsible**
- **Be a Learner**

Expected behaviours are acknowledged and rewarded at both an individual and class level.

Students can earn 'bee tokens' as an individual and these can be traded for prizes at a Reward Shop.

Class groups can earn 'bee hive tokens' for positive behaviour which they can trade for whole class rewards.

Classes have an opportunity to earn 'bee hive tokens' in their classroom, at Specialist classes and in the yard.

Expectations are clearly displayed in each classroom in the form of a Matrix.

RIDING BIKES TO SCHOOL

We support and encourage students to ride their bikes and scooters to school as it is a healthy and environmentally conscious choice, BUT:

- Bikes and scooters must be in a condition that complies with safety expectations (e.g. size, brakes, tyres)
- Students must have parent permission to ride to/from school
- Students must wear a helmet when riding a bike and are strongly encouraged to do the same when riding a scooter or skateboard
- Students are strongly encouraged to lock their bikes and scooters in the bike enclosure
- Bikes and scooters must be 'walked' within the school grounds when entering and exiting the school

Please note: A 'Bike & Scooter Agreement' will be handed out during the Parent Teacher information sessions and will need to be signed by students and their parents.

ACTIVE TRAVEL PROGRAM

We are very lucky to have three school crossings to assist with safe travel to and from our school – Matlock Street (x1) and Bellbridge Drive (x2). Families are encouraged to use these crossings and develop a relationship with the very kind and supportive crossing guards who assist our students in learning and following road safety rules.

We will also continue to have **'Wheel and Walk Wednesday' every Wednesday** this year, with trophies being handed out at our weekly assemblies. In 2016, our school was No.1 in the state in Active Travel for two terms in a row and we hope to maintain a high level of participation in this program.

We encourage all children to walk or ride part/all of the way to and from school via our Active Travel Paths each day of the week.

IMPORTANT – Do Not Bring Valuable Items to School

I wish to remind parents/guardians that we strongly discourage students from bringing valuable items to school. The Department of Education and Training does not hold insurance nor does it accept responsibility for private property brought to school by students, staff and visitors. This can include mobile phones, iPods, calculators, toys, sporting equipment and cars parked on school premises. It is very sad and disappointing when valuable items are lost or damaged and we urge parents and children to make responsible choices when considering bringing any valuable items to school.

Students who bring mobile phones and/or electronic devices to school must:

- Have their parent's permission
- Leave them at the office when they arrive at school (for safe keeping)
- Pick them up from the office at the end of the school day

Does your child have ASTHMA? This is important information re Spacers

Schools/preschools in Victoria have been informed by the Asthma Foundation of Victoria about new guidelines regarding the use of spacers for children with asthma. Spacers are essential equipment when following Asthma First Aid best practice, however schools/preschools will no longer be able to wash, sterilise and re-use spacers from their asthma emergency kits when assisting students with asthma symptoms.

If your child has an Asthma Plan (which should be signed by a doctor and handed to the Office for filing with our First Aid Coordinator) you will need to supply a spacer to be stored at the office in case of emergency. If we do not have a spacer and need to use one for your child from the school supply we will need to charge parents for the replacement fee (\$10.00). Please help us to be prepared to look after your child's asthma needs if they arise.

Make sure you tell your child's teacher of any other medical conditions or special needs or requirements at the Parent Teacher meeting on Monday, February 20th and Tuesday, February 21st.

STUDENT SAFETY around our SCHOOL

The safety of students is very important to us. We've noticed a few parents have been using the Staff Car Parks as a drop off area for students. We understand that at times it may feel convenient for parents to use the car park but it does not comply with safety guidelines.

For safety reasons, **students are not to be in the Staff Car Park at any time**, unless under the supervision of a teacher.

Please help us to make sure your children are safe when arriving and leaving school by doing the following, where applicable:

- Drop them off using the footpath as an exit point at a parking bay on Bellbridge Drive or Matlock Street.
- Make sure your children use the School Crossing if/when they need to cross Bellbridge Drive or Matlock Street in order to enter or exit the school.
- Do not call students to cross the street when you are not parked on the school side of the road.

SCHOOL COUNCIL ELECTIONS

We will have some vacancies for positions on School Council this year and will be seeking nominations from parents to participate in an election process in order to fill these positions in a few weeks.

The notices for the election of new School Council members will be posted around the school soon.

- School Council meets once a month on the third Monday of each month at 7:00pm.
- Members of School Council contribute to discussions related to many of the decisions that govern the operations of the school.
- The term of office is generally for two years with the ability to nominate again as often as you like.

Parents are able to nominate themselves for School Council without the need to be seconded by another parent. We will advise parents when the nomination forms are ready and the official process is underway. The successful nominees will take office as of our March meeting.

Debbie Clancy
Principal

Meet the Principal & the Leadership Team

Friday, February 9th

Parents are invited to meet with our Principal, Debbie Clancy and the Leadership Team (Tania Hunt, Alysha Jarvis and Helen Baldock) after Assembly on Friday, February 9th.

This will be a brief, informal gathering where parents have the opportunity to ask questions and/or have a short tour of sections of the school.

CHANGE OF PERSONAL DETAILS

It is of the utmost importance that all family contact details are kept up to date. SMS, via Compass is regularly used to inform parents/guardians of an upcoming event that requires consent and payment and will be used to inform families in emergency situations. A Change of Details form can be obtained from the office. Please note that changes to email addresses and mobile numbers can be updated on Compass.

ESSENTIAL EDUCATION ITEMS

Thank you to all parents/guardians who have paid their Essential Learning Items fee of \$200.00 per student. This fee is set by School Council and is used for activities and services that are essential to support student learning of the standard curriculum.

A reminder that payments can be made on Compass or at the office via cash or EFTPOS.

COMPASS

Please note that Compass is now our preferred payment option for fees and charges and is also being used for Parent/Teacher Conference bookings.

If you have any queries please do not hesitate to contact the office

CSEF

If you have a health care card or a pension card, you may be eligible for the Camps, Sports and Excursion Fund (CSEF) payment.

You can obtain an application from the office. A copy of your health care card or pension card will be required.

Please note: If you applied in 2017, you **do not** need to reapply unless there has been a change in your family circumstances.

Applications close on the 16 April 2018

Re: **SUNSCREEN APPLICATION AT SCHOOL**

Dear Parent/Guardian,

Last year, Bellbridge Primary School acquired state-wide recognition for our efforts in promoting Sun Protection at our school.

Ultra-violet radiation is a type of radiation produced by the sun. UV radiation can lead to a number of health issues, but it is also our main source of Vitamin D. Each classroom contains a poster outlining the daily UV level. The SunSmart app is also on our school's website (scroll to the bottom of the homepage).

When the UV level is below 3, it is important that we allow ourselves to absorb the Vitamin D from the sun, however, when these levels go above 3, sun protection is recommended. In Term 1 and 4, students wear hats in accordance with our Sun & UV Protection policy. In Terms 2 and 3, the UV levels are generally below 3. On the occasion where the UV level may go beyond this safe level, the students will be encouraged to follow SunSmart recommendations, which include:

- Slip on a shirt
- Slop on sunscreen
- Slap on a hat
- Seek shade
- Slide on sunglasses



Each classroom has been provided with a bottle of sunscreen (Cancer Council, SPF 30+), which students will be able to use when the UV levels are above 3, if they wish. Students will be applying the sunscreen themselves, with teacher direction if required. It would be helpful if you could ensure your child is clear on how to correctly administer sunscreen. You are welcome to provide your child with your own sunscreen if you prefer, which can remain stored in their bag until needed.

If your child has a specific health issue and should not use school-provided sunscreen, please notify the school office so this information can be noted and passed to the relevant teaching staff and school nurse.



SAFER INTERNET DAY 2018 – Tuesday 6th February

Basic steps to protect your children online:

- ✔ Install and maintain a content filter on your computer or use parental controls on your security software.
- ✔ For young children, set up your computer to only access approved websites and email addresses.
- ✔ Monitor where your children go online.
- ✔ Educate your children not to share personal information online.
- ✔ Report cyber bullying to your child's school or ISP.
- ✔ Remind your children to never meet someone in person who they have met online unless a responsible adult is also present.

Source: Australian Government – Protect Yourself Online (Second Edition)

Your child's age	Recommended screen time
Under 2 years	Zero. Babies and toddlers should not watch any television or other electronic media (DVDs, computers and electronic games).
2 to 5 years	Less than one hour per day. Limit their time sitting and watching TV or using other electronic media to less than one hour per day.
5 to 17 years	Less than two hours per day. Limit their use of electronic media for entertainment (i.e. TV, computers and seated electronic games) to no more than two hours per day.

Australia's National Physical Activity and Sedentary Behaviour Guidelines

*These guidelines are for entertainment purposes only and do not include screen time for educational purposes.

Source: <https://www.esafety.gov.au/education-resources/iparent/staying-safe/balancing-time-online/how-much-is-too-much>

For more information on how to keep your children online, visit:
www.cybersmart.gov.au

STAFF LIST 2018

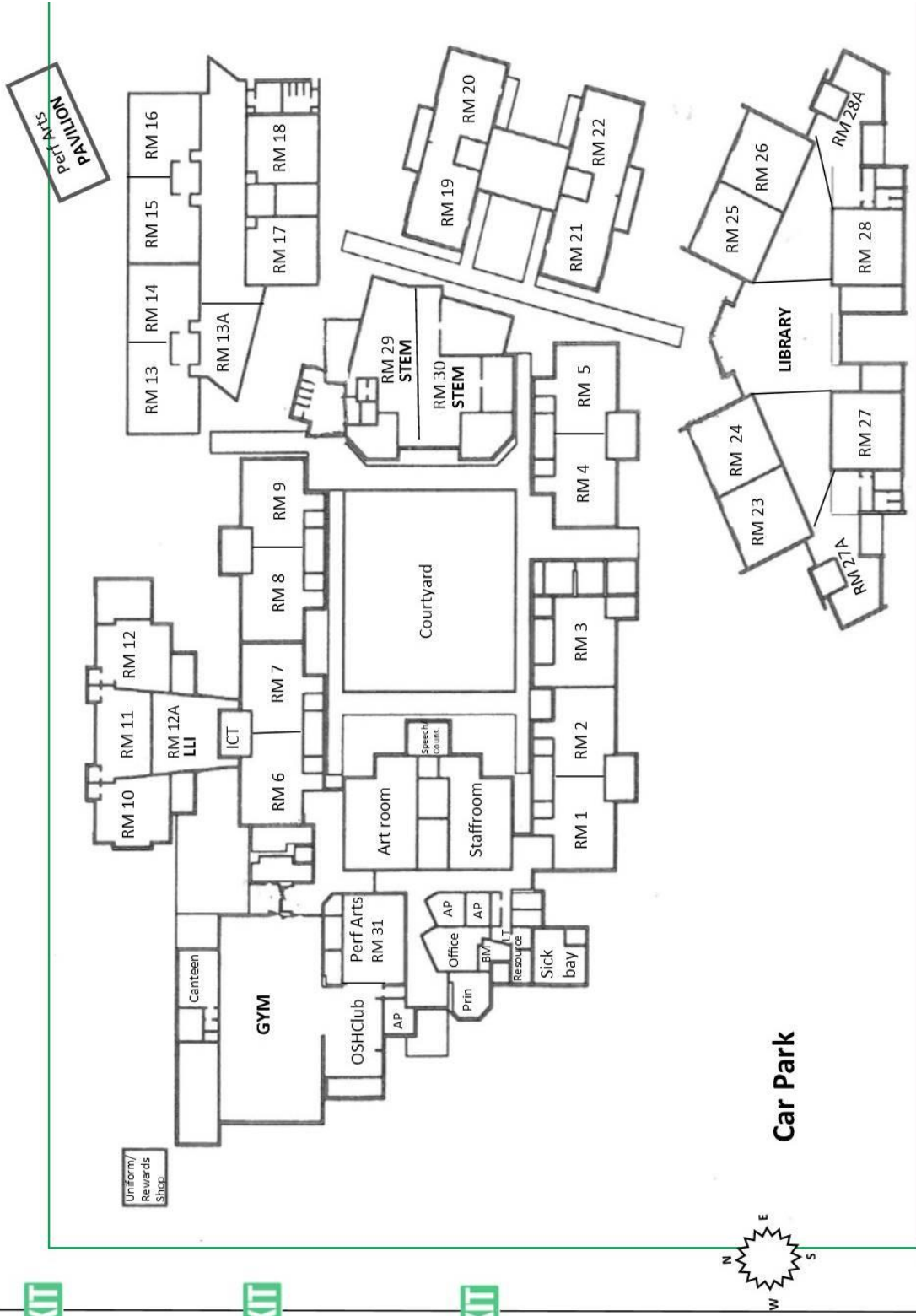
*Team Leader

Area	Name	Role	Room
ADMIN	Debbie Clancy	Principal	Prin Office
	Tania Hunt	Assistant Principal	AP Office
	Helen Baldock	AP (Grades P-3)	AP Office
	Alysha Jarvis	AP (Grades 4-6)	AP Office
	Belinda Onofretchook	Leading Teacher	LT Office
	Lisa Lynch	Business Manager	BM Office
	Nicole Strange	Admin Officer	Office
	Michelle Parker	Admin Officer	Office
	Jenny Clark	Admin Officer	Office
	Vicki Murphy (except WED)	Admin Officer	Library
	Katie Carter	Sickbay Co-ord	Sickbay
GRADE PREP	Andrea Hardwick*	Prep A	1
	Bec Parker	Prep B	2
	Janelle Chang	Prep C	3
	Molly Ashcroft	Prep D	4
	Vanessa Ciappara	Prep E	5
GRADE 1	Melissa Russell*	1A	6
	Krysta Flahive	1B	7
	Deanna Raptopoulos	1C	10
	Tayla Muscat	1D	11
	Ella Gibson	1E	12
GRADE 2	Bec Guest*	2A	8
	Casey Aquilina	2B	9
	Emma Allwright	2C	13
	Michelle Lamont (THU Lisa Keem)	2D	14
	Ann-Marie Cutajar	2E	13A
GRADE 3	Emma Haines*	3A	15
	Susan Andrews	3B	16
	Bec Burgess	3C	17
	Lynne Lloyd (THU Priscilla Patterson)	3D	18
GRADE 4	Bec Clark*	4A	28
	Shaam Nundlall	4B	28A
	Adele Gilligan	4C	26
	Dom Marafioti	4D	25
GRADE 5	Nick Bevilacqua *	5A	24
	Mike Sisson	5B	23
	Sharon Day-Askham	5C	27A
	Brooke Hawes	5D	27
GRADE 6	Malcolm Sutherland*	6A	19
	Samantha Dean (THU Naomi Bennett)	6B	20
	Jessica Fanning	6C	21
	Jaxon Leith	6D	22
SPECIALISTS	Cruze Henshaw*	PE	Gym
	Alycia Morgan	PE / Perf Arts	Gym / Pavillion
	Joan Hofmann	Performing Arts	Pavilion
	Naomi Bennett	ART	Art Room
	Sarah Murphy	STEM	Rooms 29/30
	Priscilla Patterson	Auslan	Rm 29 office
	Lisa Keem	General release	
Education Support Staff	Helena Kasem	ICT Tech Manager	Tech Office
	Pete Mockiewicz	Specialist Tech	Tech Office
	Kaye Mitchell	LLI	12A
	Sally Stephenson	LLI	12A
	Leanne Gorman	Ed. Support	Prep A
	Lindita Balla (Mon-Wed-Fri)	Ed. Support	Prep B
	Maddy Spry	Ed. Support	Prep C
	Janet Morris (Mon-Wed)	Ed. Support	Prep D
	Janice Trait	Ed. Support	Prep E
	Emma James	Ed. Support	1A
	Linda DeBono	Ed. Support	2A
	Julie Floyd (Mon-Tues-Fri)	Ed. Support	2C
	Enverie Balla	Ed. Support	3B
	Jackie Barber	Ed. Support	4A
	Helen Parker	Ed. Support	4C
	Kim Alabacos	Ed. Support	5A
	Shelley Rauner-Smith	Ed. Support	5B
	Lisa Bufalino	Ed. Support	5C
	Maureen Anderson	Ed. Support	5D
	Natasha Klein	Ed. Support	6B
	Susan Monro	Ed. Support	6C
	Brian Rich	Facilities Manager	

Bellbridge Primary School MAP

Car Park

SCHOOL OVAL



Car Park

EXIT

EXIT

MATLOCK STREET