

# PREP NEWSLETTER

~ Term 1, 2015 ~



Dear Parents/Guardians

Welcome to grade prep for 2015! We are very excited to begin the year and have lots of things planned. Please do not hesitate ask us any questions you may have about this year, we are more than happy to help.

## DROP OFF TIMES

At Bellbridge Primary School, children are expected to enter the classroom at 8:20am as this allows them time to unpack their bags, read to a buddy, change their take home books, place lunch orders in the lunch order crate and hand money, notes and messages to the teachers for them to process.

## PICK UP TIMES

For the first five weeks of term the Preps will have Wednesdays off to have a rest and allow us time to conduct an interview with each child individually. At other times, pick up is 2:40pm.

## SCHOOL UNIFORM

NO HAT NO PLAY—Term 1 and 4.

Please ensure your child has a named **navy blue legionnaires, bucket or broadbrim hat**. Students are required to be in full school uniform.

PLEASE ENSURE ALL CLOTHING IS LABELLED.

## FRUIT BREAKS

We have fruit breaks in the classroom at 12:00pm daily. It allows children to have a much needed healthy energy boost during their day. Please pack a piece of fruit or vegetable for their lunch box each day.

## DAILY ROUTINES

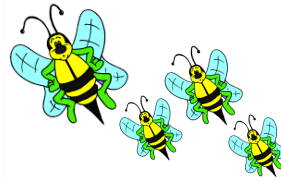
Each night your child will bring home their RED READING BAG. Inside will be their Home Reading Diary and a book. Please take the time to read with them as this is an important part of their day. They will also have letters or words to learn, which will be sent home in the second week.

## ABSENCES- IT IS NOT OKAY FOR STUDENTS TO BE AWAY!

If your child is sick or unforeseen circumstances prevent them from coming to school please phone the school office in the morning and provide a written note to the teachers explaining the absence.

## MONEY

When paying for excursions, incursions, camps, levies, etc, money should be sent to your child's classroom in a sealed envelope with the student's FULL NAME, HOMEROOM, MONEY AMOUNT and REASON FOR THE PAYMENT clearly labelled on the front.



### **INTEGRATED UNIT**

We will be looking at ourselves, families and safety this term. You may be interviewed by your children or asked to bring some artefacts from home. We may also be having a visit from some special people whose jobs help keep us safe in our community.

### **SPECIAL EVENTS IN TERM 1**

On Mondays we start the day with a whole school assembly either in the courtyard or in the gym. Students also attend three of the following four specialists each week; Performing Arts, P.E, Art or Library. On the day that your child has P.E, please ensure they wear runners. During library sessions, they will have the opportunity to borrow and return books.

We will be holding a 'Helping Your Child at Home' information night on Tuesday the 24<sup>th</sup> of February at 6:30pm. This session will include information about ways you can assist in your child's learning such as reading at home, creating independence, maths games and classroom routines.

On Friday the 20<sup>th</sup> of March, Bellbridge will be hosting a school carnival, which involves a class stall and other very exciting activities. Families are more than welcome to come along and visit out school. **-MORE INFORMATION TO COME!**

We are excited to begin this year with you all.

Regards,

Michelle Lamont, Patricia Di Natale, Susan Andrews, Alanah Smith, Samantha Dean and Vanessa Ciappara.