

GRADE 1 NEWSLETTER

~ Term 2, 2015 ~

Dear Parents/Guardians

Welcome back to school for Term 2, we hope you had a restful break.

Listed below is important information for the term. If you have any concerns, please arrange a time to discuss them with your child's teacher.

Teachers

1A - Stephanie Varga

1B - Andrea Hardwick

Classroom Education Support Staff (ESO)

1C - Melissa Russell

1D - Janelle Chang

1C / 1D - Kim Alabacos

Thank you

Thank you to everyone who supported and/or donated items for the School Carnival. The amount raised was over \$19,000. This would not have been achieved without the extraordinary support from our school community.

Drop Off Times

Children are expected to enter the classroom at **8:20am**. This allows them time to unpack their bags, read to a buddy, change their take home books, place lunch orders in the lunch order crate and hand any notes to the teacher. This is also an important time for teachers and students to make a settled and positive start to the day. Unfortunately, teachers are unable to meet with parents during this time, so we encourage you to contact the office if you would like to make an appointment to speak to your child's teacher.

Pick Up Times

Please ensure your child understands where you will meet them at the end of the school day. Children are encouraged to return to their classroom if they are unable to find their parents, so please check their classrooms if they are not at your designated meeting place.

School Uniform

Students are required to be in full school uniform. If a student's hair is longer than shoulder length, please have it securely tied back. Please ensure **all** clothing is **labeled**.

SWPBS

Our four school values are:

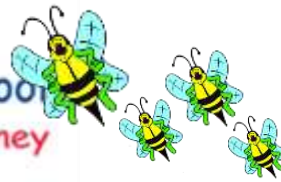
- Be Safe
- Be Responsible
- Be Respectful
- Be a Learner

Please feel free to use this language at home to enhance the home/school connection.

Please note that the courtyard is a passive place where students should be quiet, calm and walking at all times, even before school.

Specialists for Term 2

1A - Performing Arts & PE - Tuesday - Art - Thursday	1B - Performing Arts & Art - Tuesday - PE - Thursday
1C - Performing Arts & Art - Friday - PE - Thursday	1D - PE & Art - Tuesday - Performing Arts - Thursday



All Year 1's will now have library with their classroom teacher every Monday. Please ensure your child has a library bag and returns borrowed books each Monday.

Key concepts being covered this term

Reading

- Text structures and features
- Summarizing
- Questions and questioning
- Reading strategies eg stretch it out, break it up, using pictures
- Think aloud - having discussions about books

Writing

- Procedural texts eg a recipe
- Information reports

Numeracy

- Mass
- Location
- Time
- Addition and subtraction
- Division
- Place value
- Statistics and probability

Inquiry Unit

This term we will be focusing on 'Chemical and biological science: Crazy changes, the world of animals and plants'. Students will participate in activities where they will explore science through simple meaningful experiments. This unit will also include an incursion called *Animals of Oz*, which will allow students to explore animals and their features. A note was sent home on Monday regarding this event. The cost is \$7 per child which is due by Friday 29th May.

Events to look out for this term

Mother's Day afternoon - Friday 8th May

Family Maths Night - Wednesday 20th May

Queen's Birthday Holiday - Monday 8th June

Animals of Oz Incursion - Wednesday 10th June

Reports to go home - Friday 19th June

Parent Teacher Interviews - Monday 22nd and Tuesday 23rd June

It's Not Okay to be Away

If your child is going to be absent from school, please phone the school in the morning to inform us and on your child's return, please provide a written explanation of the absence to the classroom teacher.

Fruit Break and Water

Each day your child will be given a 10 minute break to have a piece of fruit at 12pm. Please provide your child with a piece of fruit every day. We also encourage all students to bring a water bottle to school each day to avoid interrupting learning time to get a drink from the taps outside.

Regards,

Mrs Stephanie Varga

Ms Andrea Hardwick

Miss Melissa Russell

Mrs Janelle Chang