

GRADE 1A NEWSLETTER

~ Term 3, 2015 ~

Dear Parents/Guardians

Welcome back to school, we hope you had a restful break. Thank you to all the families that made the effort to attend Parent Teacher Interviews. Your care and support is valuable to the teaching and learning of your child. We look forward to many amazing moments and achievements this term.

Teachers

1A - Stephanie Varga

1B - Andrea Hardwick

1C - Melissa Russell

1D - Janelle Chang

Classroom Education Support Staff (ESO)

1C / 1D - Kim Alabacos

Specialists for Term 3

1A - Library & PE - Tuesday - Performing Arts - Thursday	1B - Library & Art - Tuesday - PE - Thursday
1C - Library & Art - Friday - PE - Thursday	1D - PE & Performing Arts - Friday - Library - Thursday

Events to look out for this term

Science Works excursion

Footy Day

Amazing Race

Athletics Day

Father's Day activities

It's not okay to be away

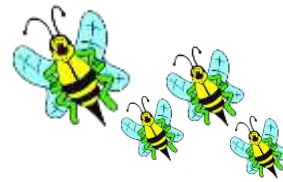
If your child is away or you know will be away please let the school know and also provide a written note upon their return.

School Uniform

Students are required to be in full school uniform. If a student's hair is longer than shoulder length, please have it securely tied back. Please ensure **all** clothing is **labeled**.

Take Home Reading

Please help ensure your child continues to read their take-home book each night and records their reading in their reading journal. Nightly reading is displayed on our class reading wall.



Key concepts being covered this term

Writing

This term in writing we will be focusing on

- Narratives (story writing)
- Expositions (opinion writing)

Maths

This term we will be focusing on the following areas in maths.

- Data and graphs
- Patterns
- Multiplication using language such as 'groups of'
- Addition and subtraction
- Giving and following directions
- 2D shapes and 3D objects
- Sharing (division)

Reading

This term in reading we will be focusing on

- Asking questions
- Summarising the main ideas
- Visualising (putting a picture in our head)
- Reading strategies eg stretch it out, break it up, using pictures

Inquiry Unit

This term for inquiry we will be focusing on

- Earth
- Night vs day
- Built objects
- Natural landscapes

SWPBS

Our four school values are:

- Be Safe - Be Responsible - Be Respectful - Be a Learner

Please feel free to use this language at home to enhance the home/school connection.

Please note that the courtyard is a passive place where students should be quiet, calm and walking at all times, even before school.

Regards,

Mrs Stephanie Varga Ms Andrea Hardwick Miss Melissa Russell Mrs Janelle Chang