

GRADE 3 NEWSLETTER

~ Term 2, 2015 ~

Dear Parents/Guardians,

Welcome back to everyone for the beginning of a busy and exciting term.

We hope that you all enjoyed a restful holiday.

Parent Teacher Interviews

Parent Teacher Interviews will be held towards the end of Term 2. This will be a great opportunity to celebrate your child's successes so far and set goals for Semester 2. Notes to book times will be sent home later this term.

Punctuality

School starts for all students at 8:20am. Students have tasks to complete from the first bell, while rolls are taken and monies/notes are being collected. Late arrival can hinder students' progress and will make it difficult for them to settle into daily routines. Please ensure that students arrive at school before the 8.20am bell.

Student Diaries

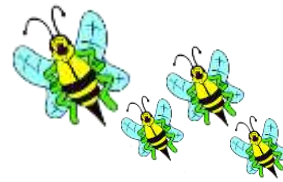
Students should be recording their reading daily. We ask that diaries are checked and signed by parents nightly or at least weekly to ensure that students are reading at home regularly. The diaries are also an effective communication tool for teachers and parents. Please feel free to write any questions or concerns in your child's diary at any time. If you need to speak to your child's teacher please request an appropriate meeting time. It is important to remember that problems are usually easier to resolve if they are dealt with promptly.

NAPLAN

On the 12th - 14th May, students in Grade 3 and Grade 5 will be sitting the NAPLAN tests. The students will be well prepared, but we must stress that this is just a one-off assessment and it is important that students should not feel anxious in any way. We wish our students all the best!

Student Wellbeing & Discipline

The grade 3 students have revisited expectations for appropriate behaviour inside and outside of their classrooms. Teachers have adopted a consistent approach to discipline with the School Wide Positive Behaviours Strategies and have a reward system involving student bees and class beehives. The students will be saving their bees and exchanging them for rewards.



Homework

Homework this term will begin in week 2 (Monday 20th April) and conclude in week 10 (Friday 19th June). It will be handed out and explained each Monday and will be expected back by Friday for correction. Every classroom has the same homework tasks.

Homework expectations are:

- To read for at least 10-15 minutes daily.
- To practise basic spelling skills and strategies.
- To practise basic number skills and strategies.
- To explore fun and engaging educational websites.

Homework should not be stressful or too time consuming. The activities are intended to support what is being done in the classroom and it is valuable for children to complete each task to the best of their ability. If you have any concerns regarding homework, please make an appointment and speak with your child's teacher.

Inquiry Unit - Celebrations and Commemorations

For our Term 2 Inquiry Unit, Celebrations and Commemorations, students will be participating in a cultural day. This will occur in the final week of term and students may dress in their cultural attire and bring a plate of food to share for a cultural feast. A note about the activity will come out later in the term.

School Activities and Important Dates

It's a good idea to keep an eye on the school newsletter for important dates and special school activities. More information can be found on the school website at: www.bellbridgeps.vic.edu.au .

We look forward to meeting with you at the Parent Teacher Interviews and working in partnership with you and your child to ensure a happy, successful and rewarding Term 2.

Regards,
Grade 3 Team.