

GRADE 1B NEWSLETTER

~ Term 4, 2014 ~

Dear Parents/Guardians

Welcome back to school, we hope you had a restful break. Thank you to all the families that made the effort to send a postcard to school whilst on your holiday. These postcards will help bring real life learning into the classroom. We look forward to many amazing moments and achievements this term.

Specialists

Wednesday- PE and Library

Thursday- Performing Arts

Events to look out for this term

Walk to school month

Curriculum Day

Melbourne Cup Day Holiday

2015 Transition mornings

End of year classroom celebrations

Reports

Inquiry Unit

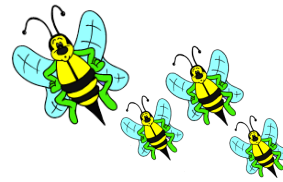
This term we will be focusing on History. We will look at the past, present and future and how lifestyles have changed. We will explore the differences and similarities in family structures and roles over time.

No hat, No Play

All students must bring a navy blue wide brimmed hat to school this term. Hats are required for outside play and to complete learning tasks outdoors.

It's not okay to be away

If your child is away or you know will be away please let the school know and also provide a written note upon their return.



Fruit Break

At 12:00pm students will be given a 10 minute break to have a piece of fruit. Please ensure your child has a piece of fruit everyday. Students are also encouraged to bring a bottle of water to school to keep on their desk for the day.

Homework

Homework will consist of three tasks each night.

1. Read your take home book.
2. Read your M100W words or spell your LSSCWC words.
3. Complete your maths task.

Homework will be handed out Mondays and is due Fridays.

M100W words or LSSCWC words will be tested on your child's Show and Tell day.

Show and Tell

All students need to have something to show or something to tell on their day as Speaking and Listening is an important skill that will be assessed and reported on throughout the year.

Take home reading

Please help ensure your child completes their reading journal each night as a record of the books they have read. Nightly reading is recorded on the class chart and rewards are given to students as they reach set goals.

Be Safe, Be Respectful, Be Responsible and Be a Learner

Just a reminder that the courtyard is a passive place at all times. There should be no running, ballgames or loud voices before or after school.

Regards,
Mrs Jodie Gauci