

# GRADE 1 NEWSLETTER

~ Term 3, 2023 ~

Dear Parents/Guardians,

Welcome back to school. We hope you had a restful break. Thank you to all the families who attended the Parent Teacher Interviews. Your care and support is valuable to the teaching and learning of your child. We look forward to many amazing moments and achievements this term.

## KEY DATES:

Monday 10/7 Term 3 begins

Monday 17/7 to Friday 28/7 Grade 1&2 Swimming Program

Monday 10/7 to Friday 14/7 NAIDOC Week

Monday 14/8 to Friday 18/8 Buddies Week and Science Week

Friday 18/8 National Day of Action against Bullying and Violence

Monday 21/8 to Friday 25/8 Book Week

Thursday 31/8 Father's Day Stall

Thursday 14/9 Footy Day

Thursday 14/9 R U OK? Day

Friday 15/9 Term 3 ends (1:40pm dismissal)

*\*Keep up to date with key dates by looking at the front page of the monthly school newsletter, and referring to our school website's calendar.*

## ASSEMBLY SCHEDULE

Assemblies will be held at approx. 2:00pm on the following Fridays, except the last day of term (1:10pm start).

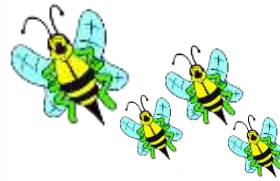
Week 1	Week 2	Week 3	Week 4	Week 5	Week 6	Week 7	Week 8	Week 9	Week 10
14/7	21/7	28/7	4/8	11/8	18/8	25/8	1/9	8/9	15/9
3-6	P-2	3-6	P-2	3-6	P-2	3-6	P-2	3-6	P-6

## RED BAG

Each night your child will bring home their red bag, which contains:

- Home reading diary
- A take-home book
- M100W word book

Reading at home is an important part of your child's learning. Please spend 10 minutes listening to your child read their book and M100W words each day.



Please make sure their **RED BAG** is brought to school **EVERY DAY** so your child can take home a new book to read each day. M100W will be checked weekly by your child's teacher. Students are also encouraged to place important notes or newsletters in their red bag.

### **THE RESILIENCE PROJECT**

The Resilience Project is a means of promoting positive mental health through practising gratitude, empathy, resilience and emotional literacy. P-6 classes engage in weekly lessons, which involve students completing an associated journal activity. The Resilience Project lessons align with the Victorian Curriculum and address aspects of: Personal and Social Capabilities and Health and Physical Education learning areas. If you'd like to see how to support this program at home, visit: <https://theresilienceproject.com.au/at-home/>.

### **RESPECTFUL RELATIONSHIPS**

Respectful Relationships is an initiative to support schools and early childhood education settings to promote and model respect and equality. It also supports educators to teach our children how to build healthy relationships, resilience and confidence.

There are 8 topics addressed every year from P-6. This term, the Grade 1 students will engage in lessons from the underlined topic/s below:

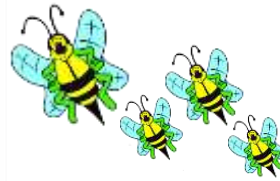
1. Emotional Literacy
2. Personal Strengths
3. Positive Coping
4. Problem-Solving
5. Stress Management
6. Help-seeking
7. Gender and Identity
8. Positive gender relations

### **TERM 3 INQUIRY UNIT: Me, My Family and My Community**

The Grade 1 students will be looking at various world cultures, countries and also their local community. While investigating our local community, the students will discuss places in the community that are special to them and their families. They will look at why those places are special, why we need them and why people go there. To complete this unit, we will be having a community walk where students will observe different aspects of our community.

### **ENGLISH IN TERM 3**

- Text structures and features - narratives
- Summarising
- Inferencing
- Visualising
- Questioning
- Comprehension
- Retelling fiction and non-fiction texts
- 6+1 traits of writing
- Recounts



- Language experiences
- Spelling, grammar and punctuation
- Writer's notebooks
- Free Writing - students write on a genre of their choice
- Handwriting

### **MATHEMATICS IN TERM 3**

- Place Value and Counting
- Addition and Subtraction
- Skip counting and number patterns
- 2D shapes and 3D objects
- Sharing
- Location
- Graphing

### **CLASSROOM TEACHERS AND SPECIALISTS DAYS**

<b>1A Miss Yanli Meng</b>	<b>1B Ms Molly Ashcroft</b>
Wednesday - AUSLAN & PE Thursday - Art & Performing Arts	Monday - Art Tuesday - Performing Arts Thursday - AUSLAN & PE
<b>1C Mrs Emma Bews</b>	<b>1D Miss Courtney Lane</b>
Monday - PE Thursday - Performing Arts & AUSLAN Friday - Art	Tuesday - Performing Arts Wednesday - AUSLAN Thursday - Art & PE

We are looking forward to an exciting Term 3,

Regards,  
Grade 1 Teachers.