

GRADE 2 NEWSLETTER

~ Term 1 2021 ~

Dear Parents/Guardians,

Welcome to Term 1! We hope you and your child have had a wonderful break and enjoyed some quality time together. Hopefully your child has had time to rest for a busy and productive term ahead.

Thank you to the parents who made sure their child has a *hat, art smock and library bag* on the first day of school. If any of these items have been overlooked, we would very much appreciate them being brought into the classroom as soon as possible.

Grade 2 teachers:

2A - Miss Tamara King (Room 8)
2B - Mrs Jenny Hayes (Room 9)
2C - Miss Karatenisli (Room 13)
2D - Ms Burgess (Room 14)

KEY DATES

Tue 9/2 - Safer Internet Day

Mon 15/2-Tue 16/2 - Parent-Teacher Conferences (PSD-funded SSGs this week also)

Mon 8/3 - LABOUR DAY HOLIDAY (No school)

Fri 19/3 - National Ride 2 School Day / National Day of Action against Bullying and Violence

Fri 1/4 - Free Dress Day & Last day of term (1:40 dismissal)

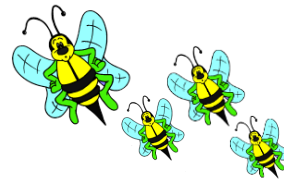
**Keep up to date with key dates by looking at the front page of the monthly school newsletter, and referring to our school website's calendar.*

ASSEMBLY SCHEDULE

Parent attendance at school assemblies was not able to continue for most of last year, and we will need to continue in this way until further notice.

Assemblies will be held for staff and students using Microsoft Teams video meetings or the gym according to health advice - at approx. 1:50pm on the following Fridays, except the last day of term - as communicated closer to the date.

Week 1	Week 2	Week 3	Week 4	Week 5	Week 6	Week 7	Week 8	Week 9	Week 10
29/1	5/2	12/2	19/2	26/2	5/3	12/3	19/3	26/3	1/4
No assembly	3-6	P-2	3-6	P-2	3-6	P-2	3-6	P-2	P-6 (Thurs)



RESPECTFUL RELATIONSHIPS

Respectful Relationships is an initiative to support schools and early childhood education settings promote and model respect and equality. It also supports educators to teach our children how to build healthy relationships, resilience and confidence. There are 8 topics addressed every year from P-6. This term, the Grade 2 students will engage in lessons from the underlined topic/s below:

1. Emotional Literacy
2. Personal Strengths
3. Positive Coping
4. Problem-Solving
5. Stress Management
6. Help-seeking
7. Gender and Identity
8. Positive gender relations

SCHOOL UNIFORM

Students are required to be in full school uniform and all clothing should have your child's name clearly written on it to reduce the amount of lost property. If a student's hair is longer than shoulder length, please have it securely tied back.

HATS

During Term 1, students are required to wear blue hats (i.e. legionnaire, broad brimmed or bucket hat) whenever they are outside. Students not wearing a hat will be required to play in the courtyard for recess and lunch.

DROP OFF TIMES

Children are expected to enter the classroom at 8:20am. This allows them time to independently unpack their bags, read and change their take home books and hand any notes or messages to the teacher. This is an important time for teachers and students to make a settled and positive start to the day.

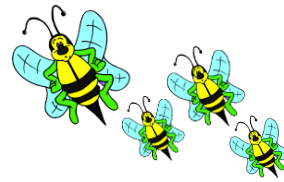
RED BAG

Each night your child will bring home their red bag, which contains:

- Diary
- A take-home book
- M100W word book (selected students only)



Reading at home is an important part of your child's learning. Please spend 10 minutes each day listening to your child read their book. If your child has spelling words, please assist them with the Look, Say, Spell, Cover, Write and Check process. Also ensure that your child's red bag is brought to school **each day**, so your child can take home a new book to read each night. Please note that the students are also encouraged to place important notes or newsletters in their red bag. **Take home books will start going home on Monday 8th February.**



Every Day Counts

If your child is going to be absent from school, please ring the school in the morning to inform us and on your child's return to school, please provide a written explanation of the absence to the classroom teacher.

SWPBS

Our four school values are: - **Be Safe - Be Responsible - Be Respectful - Be a Learner**. Please feel free to use this language at home to enhance the home/school connection. Also note that the courtyard is a passive place where students should be quiet, calm, and walking at all times, including before and after school.

FRUIT AND WATER

Each day your child will be given a 10 minute break to have a piece of fruit. Please provide your child with a piece of fruit every day. We encourage all students to bring a water bottle to school each day to avoid interrupting learning time to get a drink.



TERM 1 INQUIRY UNIT: Me and My Family

This term, students will explore their personal and family histories. They will learn about how family structures have changed throughout history. In addition to this, students will learn about other changes in history, such as schools, technology, games and toys.

ENGLISH IN TERM 1

Students will independently read each day, participate in reading activities focused on a range of decoding and comprehension strategies, and will have frequent individual and small group sessions with a teacher to further develop their reading skills. In writing, students will be developing their ability to retell stories from their own lives, as well as learn about and create poetry.

MATHEMATICS IN TERM 1

Throughout this term, students will develop their understanding of number, counting and place value. They will also expand their knowledge of addition and subtraction, location, two-dimensional shapes and three-dimensional objects.

We look forward to working in partnership with you this year and having a very successful 2021. Please do not hesitate to contact us regarding any questions or concerns.

Regards,
Grade 2 Team.