

GRADE 2 NEWSLETTER

~ Term 2, 2021 ~

Dear Parents/Guardians,

Welcome back! We hope that you all enjoyed your Easter break. We look forward to a busy and rich learning term ahead.

KEY DATES:

Monday 10/5 CURRICULUM DAY (student-free)

Monday 24/5-Friday 28/5 Buddies Week

Tuesday 25/5 Maths Night

Thursday 3/6 and Friday 4/6 School Photos

Monday 14/6 QUEEN'S BIRTHDAY PUBLIC HOLIDAY

Monday 21/6, Tuesday 22/6 and Wednesday 23/6 Parent-Teacher Conferences

Friday 25/6 Term 2 ends (1:40pm dismissal)

**Keep up to date with key dates by looking at the front page of the monthly school newsletter, and referring to our school website's calendar.*

ASSEMBLY SCHEDULE

Parent attendance at school assemblies is still not possible until further notice.

Assemblies will be held for staff and students at approx. 1:50pm on the following Fridays, except the last day of term (1:10pm start).

Week 1	Week 2	Week 3	Week 4	Week 5	Week 6	Week 7	Week 8	Week 9	Week 10
23/4	30/4	7/5	14/5	21/5	28/5	4/6	11/6	18/6	25/6
3-6	P-2	3-6	P-2	3-6	P-2	3-6	P-2	3-6	P-6

Parent - Teacher Communication

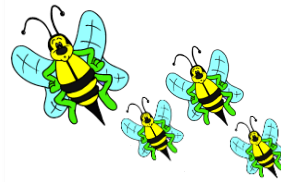
Where possible, please email or use your child's diary as a means of communication with the classroom teacher. If you need to speak to your child's teacher about an urgent matter, please call the school to leave a message and we will call you back as soon as possible.

Every Day Counts

If your child is going to be absent, please notify the school. Upon their return (or earlier, if possible), please provide a note regarding their absence (including: date, name, grade and reason for absence). Absence details can also be entered directly into Compass.

SWPBS

Our four school values are: Be Safe, Be Responsible, Be Respectful and Be a Learner. Please feel free to use this language at home to enhance the home/school connection.



THE RESILIENCE PROJECT

The Resilience Project is a means of promoting positive mental health through practising gratitude, empathy, resilience and emotional literacy. P-6 classes engage in weekly lessons, which involve students completing an associated journal activity. The Resilience Project lessons align with the Victorian Curriculum and address aspects of: Personal and Social Capabilities and Health and Physical Education learning areas. If you'd like to see how to support this program at home, visit: <https://theresilienceproject.com.au/at-home/>.

TERM 2 INQUIRY UNIT: My Community

Students will learn about the history of their local community. They will compare pictures and objects from the past and present, and discuss significant events and sites. Students will also investigate the effect of changing technology on people's lives.

ENGLISH IN TERM 2

Students will independently read each day, participate in reading activities focused on a range of decoding and comprehension strategies, and will have frequent individual and small group sessions with a teacher to further develop their reading skills and set personal goals. In writing, students will learn about and create fiction stories (narratives).

MATHEMATICS IN TERM 2

Students will further develop their understanding of number, counting and place value. They will also expand their knowledge of addition and subtraction strategies, number patterns, chance and data, time, and money.

We look forward to another great term!

Regards,

Grade 2 Team 😊