

GRADE 5 NEWSLETTER

~ Term 1 2020 ~

Dear Parents/Guardians

Welcome to all of the students and parents who will be part of the Grade 5 team this year.

The grades are as follows:

Grade 5A (Room 23) - Mrs Samantha Simpson

Grade 5B (Room 24) - Miss Monika Mikula

Grade 5C (Room 27) - Miss Liz Purcell

Grade 5D (Room 27A) - Mr Mike Sisson

Thank you to all those parents who made sure that their child had a hat, art smock and library bag on the first day of school. If any of these items have been overlooked, we would very much appreciate them being brought into school as soon as possible to ensure a smooth and happy start to the year for students.

KEY DATES

Fri 7/2 - Bellbridge Swimming Competition

Tue 11/2 - Safer Internet Day

Mon 17/2-Tue 18/2 - Parent-Teacher Meetings (PSD-funded SSGs this week also)

Wed 4/3 - English Night

Mon 9/3 - LABOUR DAY HOLIDAY (No school)

Fri 13/3 - Grade 4/5 Grand Prix

Fri 13/3 - National Ride 2 School Day

Mon 23/3 - NAPLAN Practice Day

Fri 27/3 - Free Dress Day & Last day of Term 1 (1:40 dismissal)

**Keep up to date with key dates by looking at the front page of the monthly school newsletter, and referring to our school website's calendar.*

ASSEMBLY SCHEDULE

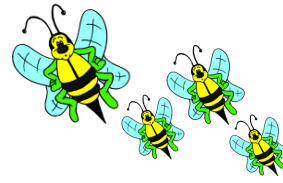
Assemblies will be held in the school gym at approx. 1:50pm on the following Fridays, except the last day of term - as communicated closer to the date.

Week 1	Week 2	Week 3	Week 4	Week 5	Week 6	Week 7	Week 8	Week 9
31/1	7/2	14/2	21/2	28/2	6/3	13/3	20/3	27/3
3-6	P-2	3-6	P-2	3-6	P-2	P-6	P-2	P-6

RESPECTFUL RELATIONSHIPS

Respectful Relationships is an initiative to support schools and early childhood education settings promote and model respect and equality. It also supports educators to teach our children how to build healthy relationships, resilience and confidence.

There are 8 topics addressed every year from P-6. This term, the Grade 5 students will engage in lessons from the underlined topics below:



1. Emotional Literacy
2. Personal Strengths
3. Positive Coping
4. Problem-Solving
5. Stress Management
6. Help-seeking
7. Gender and Identity
8. Positive gender relations

SCHOOL TIMES

School starts for all students at 8:20am and students have tasks to complete from the first bell, while the rolls are taken and money/letters are being collected. **Late arrival can seriously hinder student progress and will make it hard for them to settle into the daily routines.**



HATS

During Term 1 and Term 4, students are required to wear blue hats (i.e. legionnaire, broad brimmed or bucket hat), whenever they are outside. Students not wearing a hat will be required to play in the courtyard during recess and lunch.

PARENT/TEACHER MEET & GREET

In order to provide the best learning opportunities for your child, we want to ensure the best home-school partnership possible. We are therefore keen for all parents to meet with their child's classroom teacher at the start of the year. We look forward to meeting you on the 17th or 18^h February (details to follow soon about booking on Compass).

NETBOOKS

The Grade 5s will be undertaking their second year in the netbook program, building on the great work and skill development done in Grade 4. Please ensure home users bring their netbooks to school, each day, fully charged.

We are hoping that as many of you will take up the lease option (\$60 per term, or \$200 for the whole year paid up-front), in order that your child can have the use of their netbook to fully utilise the tools available, including the use of netbooks to complete homework tasks. Those parents who paid \$60 before the holidays can still get the discounted annual cost, by paying the remaining \$140 as soon as possible.



HOMEWORK

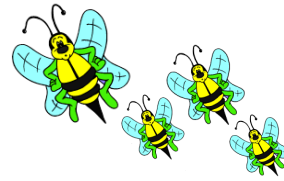
Homework will begin at home in Week 3, with homework standards being set up in class prior to being sent home. Homework will be handed out and explained each Monday and will be expected back each Friday for correction. Homework expectations are:

Daily: To read for 15 mins (noted in diary with parent signature).

Per week: Complete one English, one Maths, one Inquiry and one Health/Active Travel task.

Homework should not be stressful or too time consuming. The activities support what is being done in class and students should aim to complete tasks to the best of their ability.





ONGOING COMMUNICATION - STUDENT DIARIES

Diaries will be given to all students and we ask that they are checked and signed by parents each week (beginning in Week 3). This is a great way for students to organise their school and homework demands, also ensuring parents and teachers have effective communication with each other.

If you need to speak to your child's teacher, please feel free to arrange an appropriate meeting time. Problems are usually easier to resolve if they are dealt with promptly.

If your child is absent/sick/late, please inform us in writing or on Compass so that the office can maintain up to date records.



GRADE 4/5 CAMP

This year the Grade 4/5 school camp will be held at Anglesea Beach Camp, Anglesea. This is our three day 'beach' camp and takes place from Wednesday 21st - Friday 23rd October. The cost will be approximately \$280. We hope as many children as possible will be able to participate in this positive experience and we will be sending out notes in Term 2 to begin organising this year's camp.



TERM 1 INQUIRY UNIT: OUR PLACE IN THE WORLD

This term we will be looking at cyber-safety and how we can be proficient global citizens in an ever-changing world. We will also be looking at rules and laws, and the roles of different levels of government, along with the rights and responsibilities of being an Australian citizen. We will continue to develop our 1:1 netbook program, building on the core skills from last year and develop guidelines for working online, with the later intention of setting up class blogs.

ENGLISH IN TERM 1

Students will be expected to complete 20 minutes of independent reading in class each day. During this time, teachers will be completing one-on-one reading conferences with students, to determine appropriate reading goals for your child. Reading activities in class will involve focusing on a range of comprehension strategies. In writing sessions, students will be focusing on persuasive writing, where they will have the opportunity to be involved in class and year level debates. They will also be introduced to narrative writing later this term. Students will also have a weekly spelling and grammar focus.

MATHS IN TERM 1

This week, students will be completing a Term 1 pre-test as a maths assessment, which will give classroom teachers an indication of existing skills and understandings, and will be used to drive our teaching this term. We will also be focusing on the following areas:

Number and Algebra: Place Value, Operations and Problem-Solving

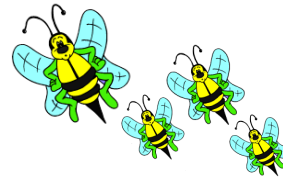
Measurement and Geometry: Time and Angles

Statistics and Probability: Data and Graphing

Students will complete weekly maths challenges in class, to instil good mental calculation practices, with trophies handed out at each 3-6 Friday assembly.

SPECIALIST PROGRAMS

Students will receive specialist tuition in the areas of Physical Education, AUSLAN (Sign Language), S.T.E.M. (Science, Technology, Engineering and Mathematics), and Performing Arts (Semester 1) then Art (Semester 2). There may also be the opportunity for Grade 5s to participate in interschool sport with our Grade 6 students throughout the year.



SCHOOL WIDE POSITIVE BEHAVIOURS & EARN AND LEARN

In keeping with the establishment of the whole school approach to student wellbeing, Grade 5 students will be involved in discussing common rights and responsibilities and how these impact on classrooms, and the school in general. Students will receive rewards through collecting individual bee tokens, whole-class beehives, as well as the Grade 5 Earn and Learn incentive program. Rewards will include involvement in special excursions, such as trips to the 2020 Australian Grand Prix!



ACTIVE TRAVEL

Every Wednesday is 'Wheel and Walk Wednesday', where we encourage students to walk or ride a bike, scooter, or skateboard to school. For those that live too far from school, we encourage students to get dropped off on one of our Active Paths and walk or ride the rest of the way. Each Wednesday, classroom teachers collect data on how our students travelled to school. We have seen great improvements in our school's active travel rate since the implementation of this program, and we look forward to seeing this rate continue to improve.



WASTE-FREE WEDNESDAY

As part of our health focus at Bellbridge, we also run Waste Free Wednesday. Students are encouraged to bring in a minimal amount of rubbish in their lunch boxes on Wednesday so as to limit our impact on the environment. Ideas to help this can be nude food lunch boxes, or reusable plastic containers instead of disposable wrappers.

BIKE EDUCATION

As part of the Active Travel program, we have introduced a Bike Education program at Bellbridge, with our Grade 5 students, to encourage more students to ride to school on a daily basis. We intend to commence this program in Term 1. We ask that students bring in a road-worthy bike and helmet to these sessions and it would be excellent preparation if you could discuss with your child some basic safety checks. For students who do not have access to their own bike and/or helmet, the school has purchased a small set of spare bikes and helmets which will be accessible to students.

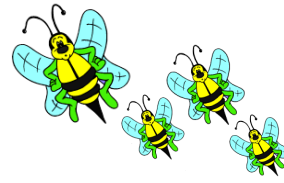


INTERSCHOOL SPORT

This year the Grade 5 students will be supporting the Grade 6's during Interschool Sports. This will be of no extra charge, and will reward students for not only exceptional athletic skills, but also their attitude and effort in the classroom. During Term 1, Grades 5A and 5B students will be focusing on hockey, with the goal of competing in the Gala Day later this term against other schools. Grade 5C and 5D will have the chance to participate in Interschool Sports in Term 2.

NAPLAN Practice Day

On Monday 23rd March, Grade 3 and 5 students will take part in a practice NAPLAN test. This is a mandated, nation-wide scheduling, and will not affect the student's scores for the real NAPLAN next term. The aim of this session is to familiarise the students with the NAPLAN procedures and to tackle any technical issues that may arise for the students in completing the NAPLAN.



MOBILE PHONES

In accordance with school policy, all mobile phones will be handed in to the office on arrival at school each morning and collected in the afternoon. Any urgent information requiring communication to your child through the course of the day can be made through our office.

We look forward to working in partnership with you this year and having a very successful 2020 year.

Regards,
Grade 5 Team.