

# GRADE 5 NEWSLETTER

~ Term 2, 2021 ~

Dear Parents/Guardians,

Welcome back! We hope everyone is rejuvenated and ready for another busy term!

## KEY DATES:

Monday 27/4 - District Cross Country

Monday 10/5 CURRICULUM DAY (student-free)

Tuesday 11/5 - Writing NAPLAN

Wednesday 12/5 - Reading NAPLAN

Thursday 13/5 - Language Conventions NAPLAN

Friday 14/5 - Numeracy NAPLAN

Monday 24/5-Friday 28/5 Buddies Week

Tuesday 25/5 Maths Night

Wednesday 26/6 - Division Cross Country

Friday 28/5 - Grade 3-6 Athletics Carnival

Thursday 3/6 and Friday 4/6 School Photos

Monday 14/6 QUEEN'S BIRTHDAY PUBLIC HOLIDAY

Monday 21/6, Tuesday 22/6 & Wednesday 23/6 - Parent-Teacher Meetings

Friday 25/6 Term 2 ends (1:40pm dismissal)



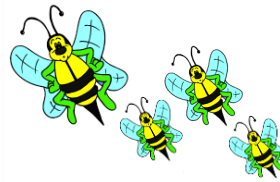
*\*Keep up to date with key dates by looking at the front page of the monthly school newsletter and referring to our school website's calendar.*

## ASSEMBLY SCHEDULE

Parent attendance at school assemblies is still not possible until further notice.

Assemblies will be held for staff and students at approx. 1:50pm on the following Fridays, except the last day of term (1:10pm start).

Week 1	Week 2	Week 3	Week 4	Week 5	Week 6	Week 7	Week 8	Week 9	Week 10
23/4	30/4	7/5	14/5	21/5	28/5	4/6	11/6	18/6	25/6
3-6	P-2	3-6	P-2	3-6	P-2	3-6	P-2	3-6	P-6



## **RESPECTFUL RELATIONSHIPS**

Respectful Relationships is an initiative to support schools and early childhood education settings promote and model respect and equality. It also supports educators to teach our children how to build healthy relationships, resilience and confidence.

There are 8 topics addressed every year from P-6. This term, the Grade 5 students will engage in lessons from the underlined topic/s below:

1. Emotional Literacy
2. Personal Strengths
3. Positive Coping
4. Problem-Solving
5. Stress Management
6. Help-seeking
7. Gender and Identity
8. Positive gender relations

## **THE RESILIENCE PROJECT**

The Resilience Project is a means of promoting positive mental health through practising gratitude, empathy, resilience and emotional literacy. P-6 classes engage in weekly lessons, which involve students completing an associated journal activity. The Resilience Project lessons align with the Victorian Curriculum and address aspects of: Personal and Social Capabilities and Health and Physical Education learning areas. If you'd like to see how to support this program at home, visit: <https://theresilienceproject.com.au/at-home/>.

## **TERM 2 INQUIRY UNIT: Earth and Nature**

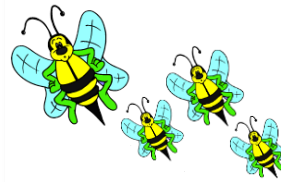
This term's inquiry focus' will be on geography knowledge and skills, and digital technologies.

As part of our geographical study, we will be focusing on the following key questions to broaden our students understanding of the world's diversity:

- How do places, people and cultures differ across the world?
- How do people's connection to places affect their perception of them?
- How do people and environments influence one another?

Students will learn about the different continents of the world and work in small groups to complete guided research about a specific country, and present their findings to their peers. Through integrated mathematics curriculum, students will use their mapping skills to collect geographical data from the world around them.

As part of writing in Term 2, students will create their own narratives, which in inquiry, they will be bringing to life through Claymation. Students will work in small groups to create characters made out of clay from one of their chosen narratives, as well as a setting using various materials. They will use Ipevo cameras to capture the story, and use the programs MonkeyJam and MovieMaker to bring their story to life.



## **ENGLISH IN TERM 2**

Students will continue to be expected to complete 20 minutes of independent reading in class each day. During this time, teachers will be completing one-on-one reading conferences with students to determine appropriate reading goals for your child. Reading activities in class will involve focusing on a range of comprehension strategies to develop our students' abilities to infer meaning from a range of text types. In writing sessions, students will be focusing on narrative writing. They will also be introduced to information report writing later this term, and will be completing projects and oral presentations relating to our inquiry unit.

## **MATHEMATICS IN TERM 2**

In Maths this term, students will be undertaking activities to prepare them for NAPLAN testing, in the first few weeks. They will be using practice tests to become familiar with the specific layout and demands of the online test. Students will be undertaking a unit of work on fractions and decimals, a measurement and geometry unit which will focus on two-dimensional shape properties, symmetry and three-dimensional nets, as well as a unit focusing on chance and probability. Grade 5 students will also participate in Maths Workshops, aimed at providing support in specific areas of learning and an opportunity to extend our students who excel in Maths.

## **GRADE 5 NETBOOKS**

The 1:1 netbook program continues to grow and support student learning in many ways. Thank you for your outstanding support of the program! Any parents who still wish to pay the second installment can still do so, allowing your child to have use of their netbook at home, with full insurance coverage.



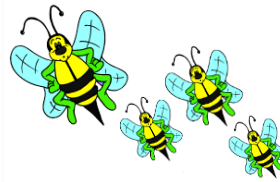
## **GRADE 4/5 CAMP 2021 - Notes of Interest**

Our school camp will be in Term 4 this year, from Wednesday 13<sup>th</sup> to Friday 15<sup>th</sup> October. We will be heading off on our bush camp to Arrabri Lodge, Warburton. In order to make preparations and finalise costs, we will be sending out notes of interest early this term. It would be great if all our Grade 4/5 students could attend as the camp experience develops some great life-long skills. The estimated cost will be approximately \$300. We understand that it's a large financial commitment and we will therefore provide payment plans to try and help stagger costs.



## **NAPLAN**

In Week 4, our Grade 5s will be sitting the NAPLAN tests. This year NAPLAN tests will be completed online. The students will be well prepared, but we must stress that this is just a one-off assessment and it is important that students should not feel exceptionally stressed. We ask that normal routines are provided at home so that children are refreshed for each day and experiencing no additional anxieties. We would greatly appreciate that all students arrive punctually each day, as late arrival not only affects the start to that student's day, but also their fellow classmates. Please also ensure that they bring their netbooks to school each day, fully charged. We wish our students well!



### **SEMESTER 1 REPORTS & PARENT-TEACHER MEETINGS**

Thank you to all those parents who participated in the introductory parent-teacher meetings in Term 1, helping to establish strong partnerships for the best outcomes of our students.

Later this term, teachers will prepare Semester 1 reports for each student, to give you an indication of the academic progress made so far this year. There will then be follow up parent-teacher meetings in the last week of term, where there will be the opportunity to discuss the report in more detail. We encourage parents to share these reports with their children, celebrate personal progress and discuss learning goals for Semester 2.



### **SPECIALIST PROGRAM**

Students will continue to participate in Specialist classes in the areas of Physical Education, AUSLAN, Performing Arts and S.T.E.M (Science, Technology, Engineering and Mathematics). There may also be the opportunity for Grade 5s to participate in interschool sports with our Grade 6 students this term.

### **GRADE 5 EARN AND LEARN PROGRAM**

We will continue with our class rewards program where students can earn money tokens for good work and exemplary behaviours. This program works in conjunction with our effective SWPBS program at Bellbridge.



We look forward to working in partnership with you again this term and having a very successful end to the first semester.

Regards,

Grade 5 Team.