

GRADE 6 NEWSLETTER

~ Term 3, 2021 ~

Dear Parents/Guardians,

KEY DATES:

Monday 19/7 and Wednesday 21/7 School Photos
 Tuesday 27/7 Family Maths Night
 Friday 6/8 CURRICULUM DAY (student-free)
 Monday 9/8 -Friday 13/8 Book Week
 Monday 9/8 Dress up Book Week
 Wednesday 11/8 Family Science Night
 Monday 16/8-Friday 20/8 Buddies Week and Science Week
 Tues 31/8 - Fri 3/9 - Grade 6 Camp
 Monday 6/9-Friday 10/9 eSmart Week
 Tuesday 7/9 Youth Centre visit
 Thursday 9/9 R U OK? Day
 Friday 17/9 Term 3 ends (1:40pm dismissal)

**Keep up to date with key dates by looking at the front page of the monthly school newsletter, and referring to our school website's calendar.*

ASSEMBLY SCHEDULE

Parent attendance at school assemblies is still not possible until further notice.

Assemblies will be held for staff and students at approx. 1:50pm on the following Fridays, except the last day of term (1:10pm start).

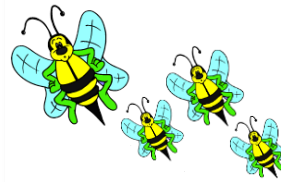
Week 1	Week 2	Week 3	Week 4	Week 5	Week 6	Week 7	Week 8	Week 9	Week 10
16/7	23/7	30/7	6/8	13/8	20/8	27/8	3/9	10/9	17/9
P-2	3-6	P-2	No assembly	3-6	P-2	3-6	P-2	3-6	P-6

RESPECTFUL RELATIONSHIPS

Respectful Relationships is an initiative to support schools and early childhood education settings promote and model respect and equality. It also supports educators to teach our children how to build healthy relationships, resilience and confidence.

There are 8 topics addressed every year from P-6. This term, the Grade 6 students will engage in lessons from the underlined topic/s below:

1. Emotional Literacy
2. Personal Strengths
3. Positive Coping



4. Problem-Solving
5. Stress Management
6. Help-seeking
7. Gender and Identity
8. Positive gender relations

THE RESILIENCE PROJECT

The Resilience Project is a means of promoting positive mental health through practising gratitude, empathy, resilience and emotional literacy. P-6 classes engage in weekly lessons, which involve students completing an associated journal activity. The Resilience Project lessons align with the Victorian Curriculum and address aspects of: Personal and Social Capabilities and Health and Physical Education learning areas. If you'd like to see how to support this program at home, visit: <https://theresilienceproject.com.au/at-home/>.

TERM 3 INQUIRY UNIT: Coming to Australia

This term will have a history focus to our study. Students will look at how Australia became a nation, how Australian society changed, who migrated to Australia, and how significant groups and people have influenced the development of Australia.

ENGLISH IN TERM 3

Students will continue to develop their reading comprehension strategies and skills, interpreting and presenting their thoughts across different fiction and non-fiction text types. This will include oral presentations, research reports and relevant note taking, closely aligned with our inquiry unit focus, with our writing genres being historical narratives and information reports.

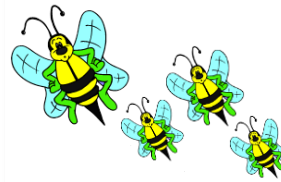
MATHEMATICS IN TERM 3

Students will develop their understanding of number sequences and apply algebraic equations to complete number sentences. Using practical applications, they will be estimating, testing, calculating and recording the probability of a variety of events. They will also be working with angles, three-dimensional objects and using capacity and volume to measure these.

Grade 6 Camp -Wombat Corner 31st Aug to 3rd Sept

Grade 6 Camp is this term from Tuesday 31st August until Friday 3rd September. Thank you to those families that have paid the initial deposit and are making regular installments. Full payment is required by 8th August any issues with these please contact your classroom teacher. Students who are attending camp will receive further information throughout the term. Please ensure you have completed and returned your child's medical and dietary information form as soon as possible.





Year 7 Transition

Notification of year 7 placements will be communicated directly from Bellbridge Primary School early August. Details of the enrolment process for each school will be sent directly from your secondary school.

Ongoing Communication

Diaries have been given to all students and we ask that they are checked and signed by parents each week. This is a great way for the students to organise their school demands, also ensuring parents and teachers have effective two-way communication with each other. Students are expected to have their diary with them at all times. We ask a parent/guardian to sign their child's diary each week as it will be checked and signed off by the classroom teacher.

Uniforms

It is important that all students are wearing correct uniform when at school. We expect all students to wear the appropriate school colours in our uniform which is light blue polo shirt, red jumper or jacket and navy blue shorts, track pants or trousers. Grade 6 students are allowed to wear their Grade 6 'hoodie'. However the hood should remain off the head whilst at school. It is also expected that students with hair at or below shoulder-length tie hair up.

We look forward to working in partnership with you throughout Term 3.

Regards,
Grade 6 Team